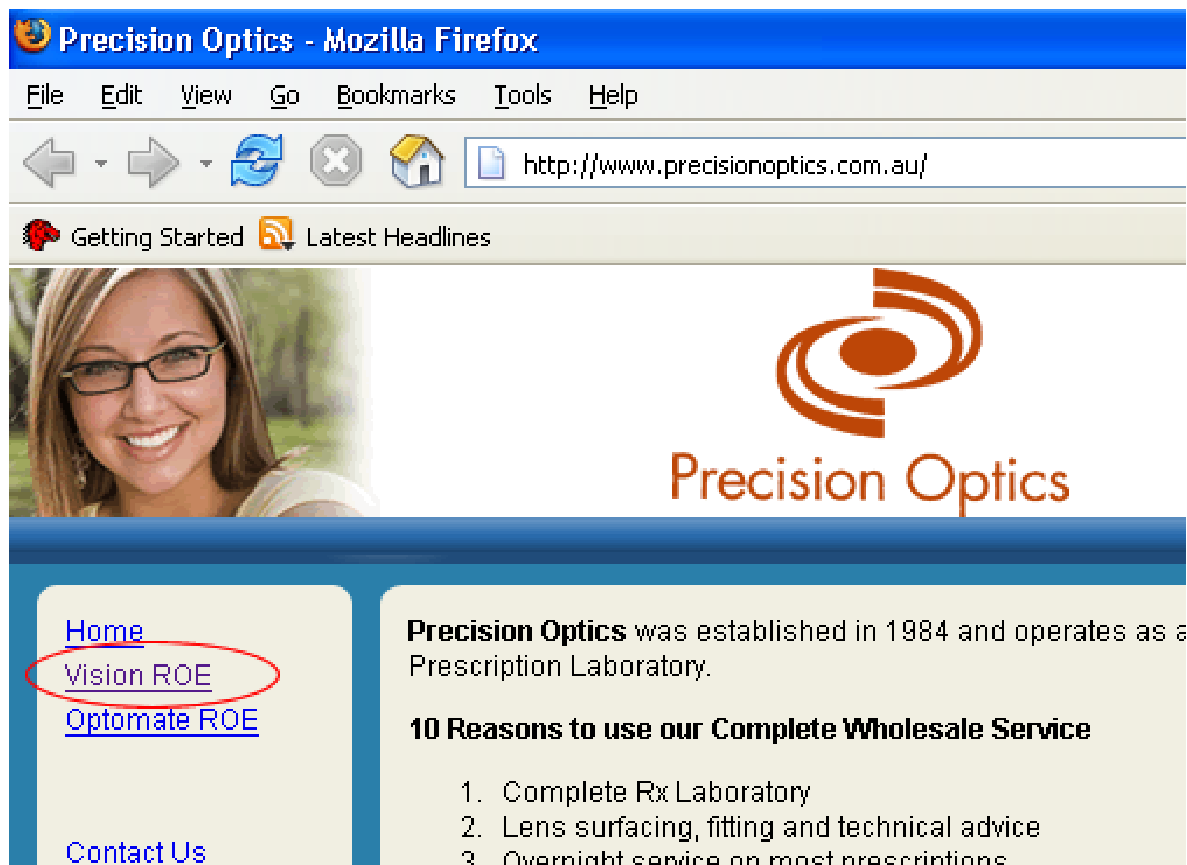


Precision Optics SUNIX Vision Setup Program

To install the Precision Optics SUNIX Vision Remote Order Entry program, click the appropriate link from Precision Optics' web site (<http://www.precisionoptics.com.au>) under the Vision ROE link.

After clicking the link to install the setup program, you may have a series of questions asking about





Precision Optics - Mozilla Firefox

File Edit View Go Bookmarks Tools Help

← → ↻ × 🏠 📄 <http://www.precisionoptics.com.au/>

🔍 Getting Started 📡 Latest Headlines




Precision Optics

[Home](#)
[Vision ROE](#)
[Optomate ROE](#)

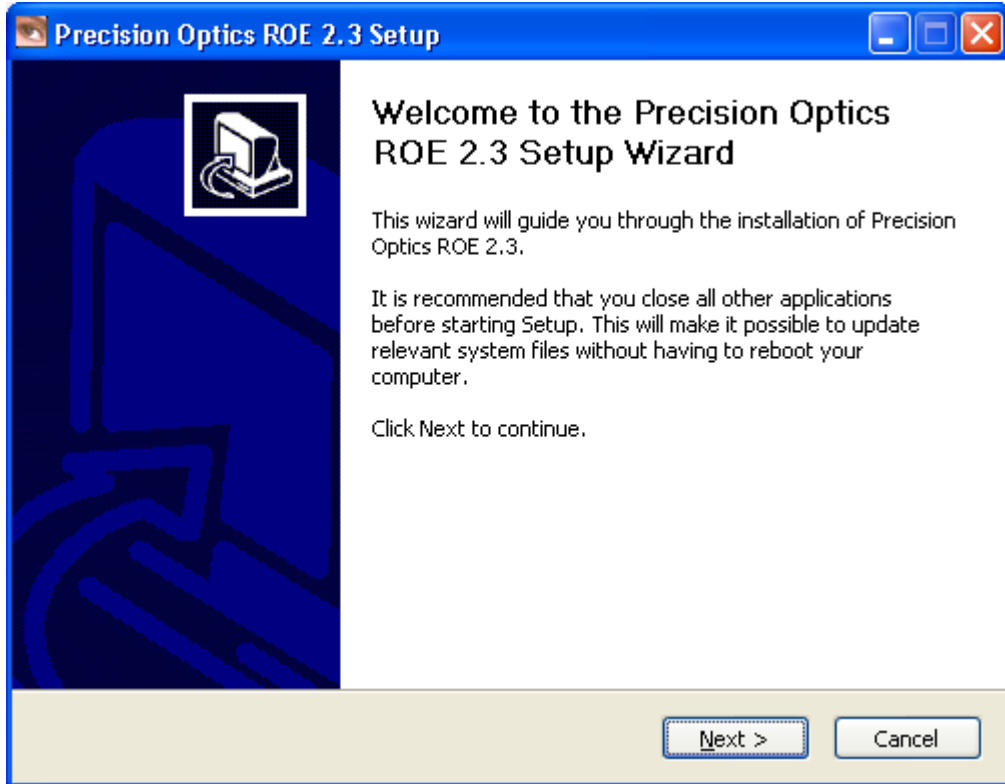
[Contact Us](#)

Precision Optics was established in 1984 and operates as a Prescription Laboratory.

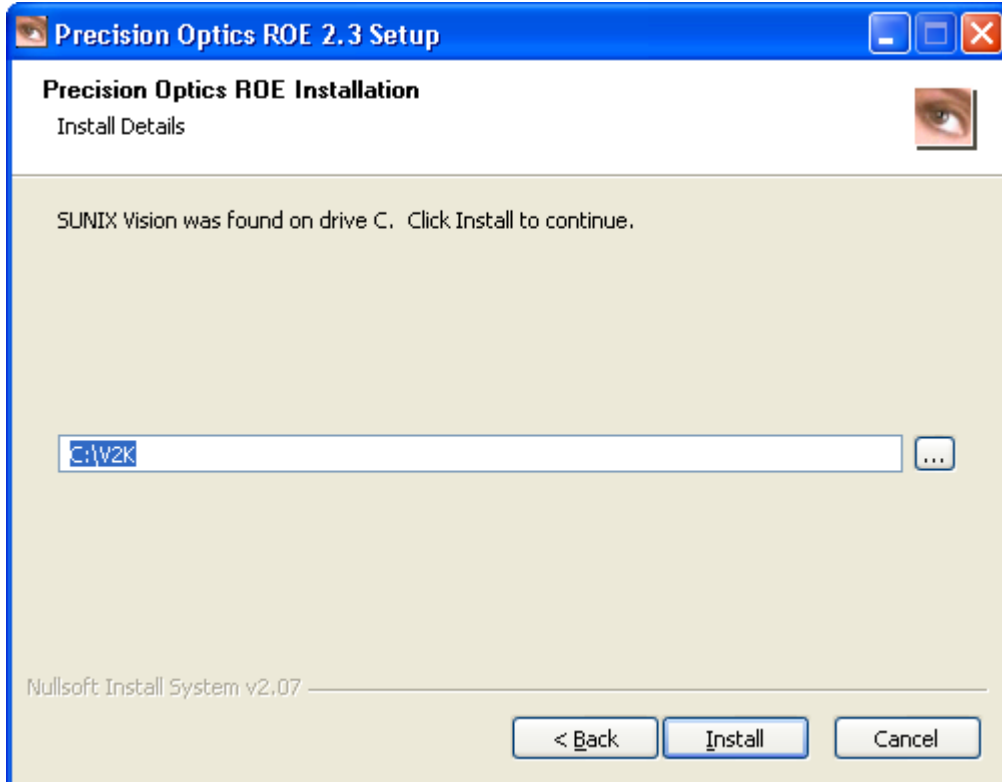
10 Reasons to use our Complete Wholesale Service

1. Complete Rx Laboratory
2. Lens surfacing, fitting and technical advice
3. Overnight service on most prescriptions

The setup program begins like this:

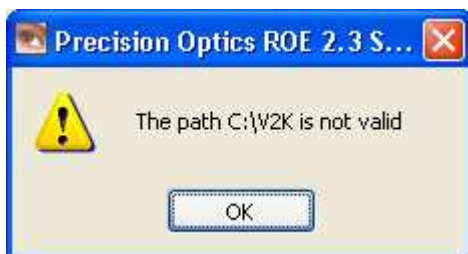


Clicking next shows this:



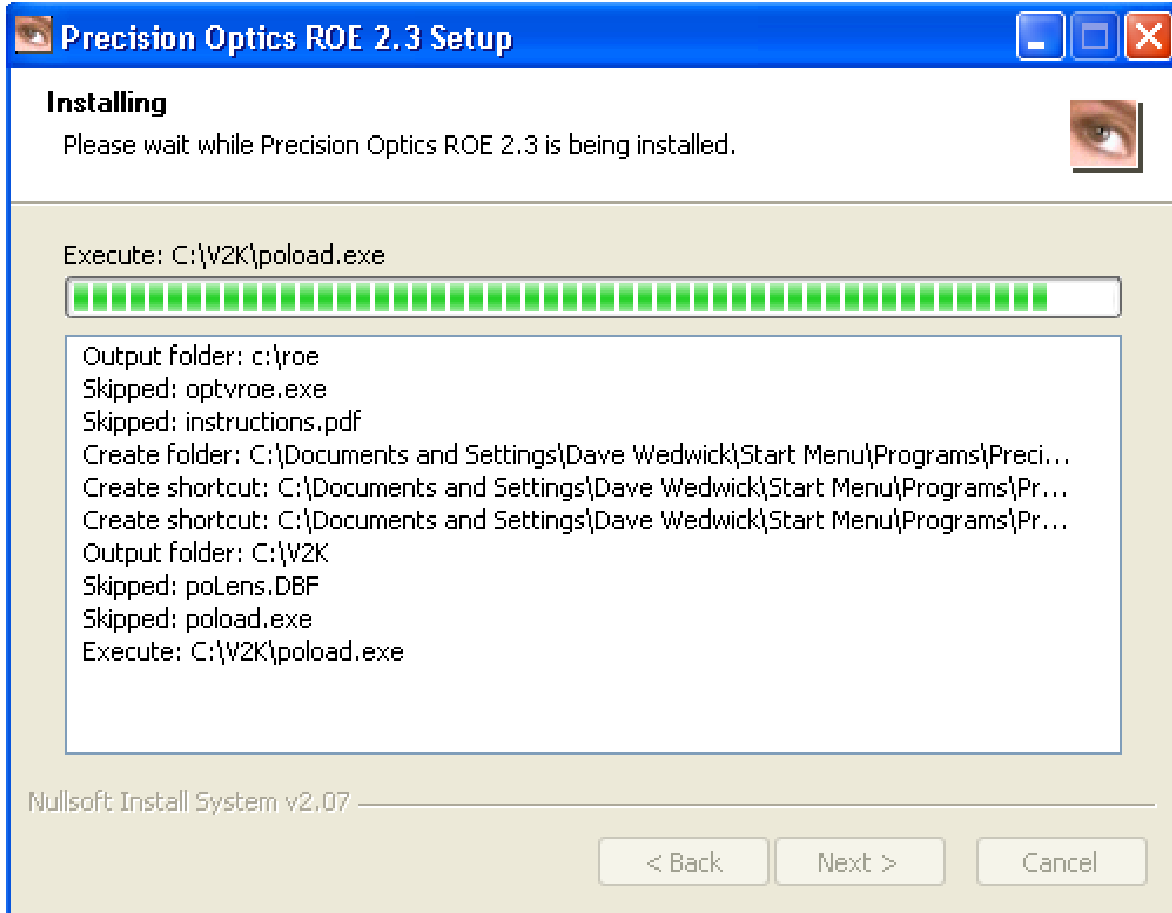
The setup program needs to know where the SUNIX Vision program is installed. The setup program looks for the SUNIX Vision database files on your computer and displays the location. In almost all situations, the value presented here does not need to be changed and it is safe to click the Install button. However, if you know that the SUNIX Vision program is installed in a different place, change this value.

If you see a message like:

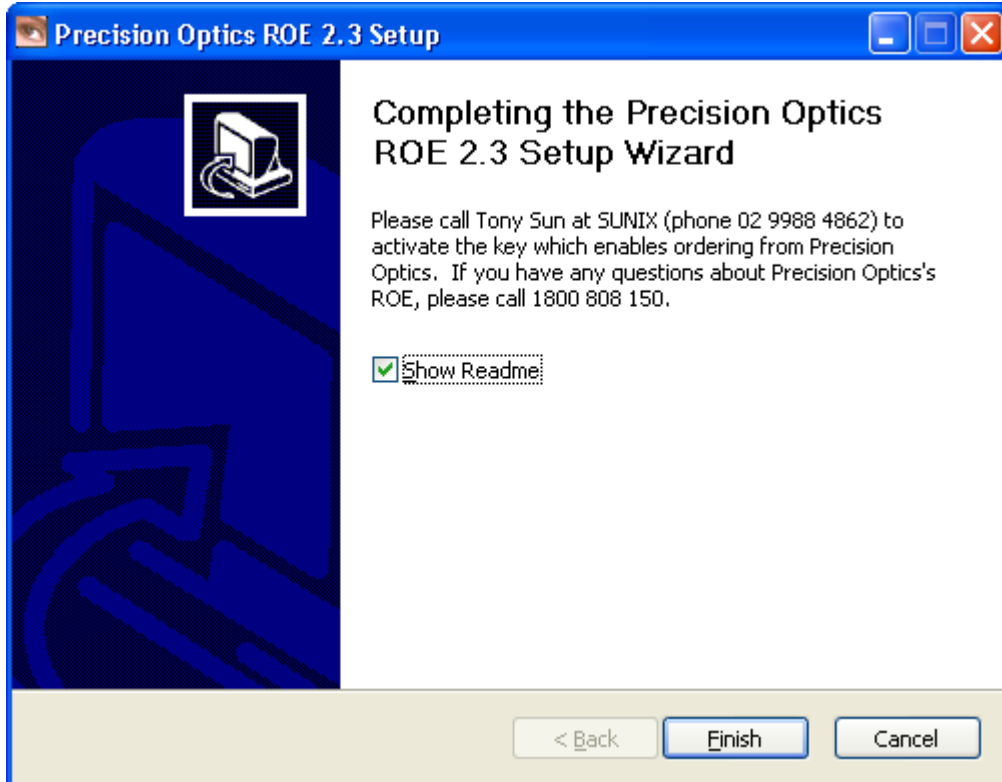


This means the setup program did not find the SUNIX Vision data files where indicated. Please verify the installation location for SUNIX Vision and re-enter this value.

The setup program proceeds with a screen that looks like the following:



When finished, the setup program displays:



Leaving the “Show Readme” checkbox selected will cause the documentation about how to set up SUNIX Vision. Click Finish to complete the installation.

Once installed, the ROE is activated through the SUNIX Vision program. You may also access the settings for the ROE by clicking Start, Programs, Precision Optics ROE and select either the ROE settings or the Instructions.

